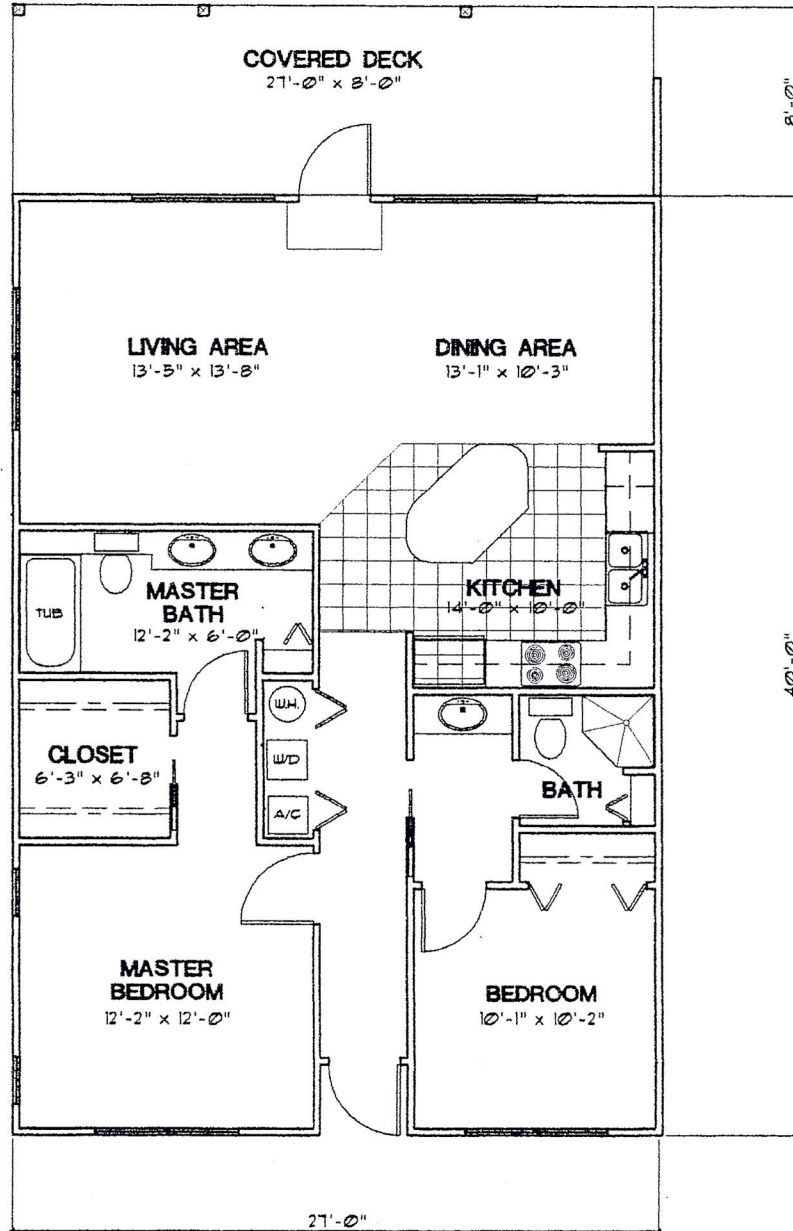


NATURES LANDING CONDOMINIUMS

SITUATED IN THE TOWN OF CEDAR KEY, SECTION 29 & 32, TOWNSHIP 13 SOUTH,
RANGE 15 EAST, LEVY COUNTY, FLORIDA



FLOOR PLAN - TWO BEDROOM

AREAS
LIVING AREA - 1080 SF.
COVERED DECK - 216 SF.

**NATURES LANDING
CONDOMINIUMS**
CEDAR KEY, FLORIDA

**Donald Alan Yanskey
ARCHITECT**
8416 Northwest 27th Street • Gainesville, Florida 32653
Phone (352) 376-1312 • FAX (352) 376-1312

SHEET

22

DATE APRIL 9, 2001

DRAWN BY D. A. Y.

OF 23