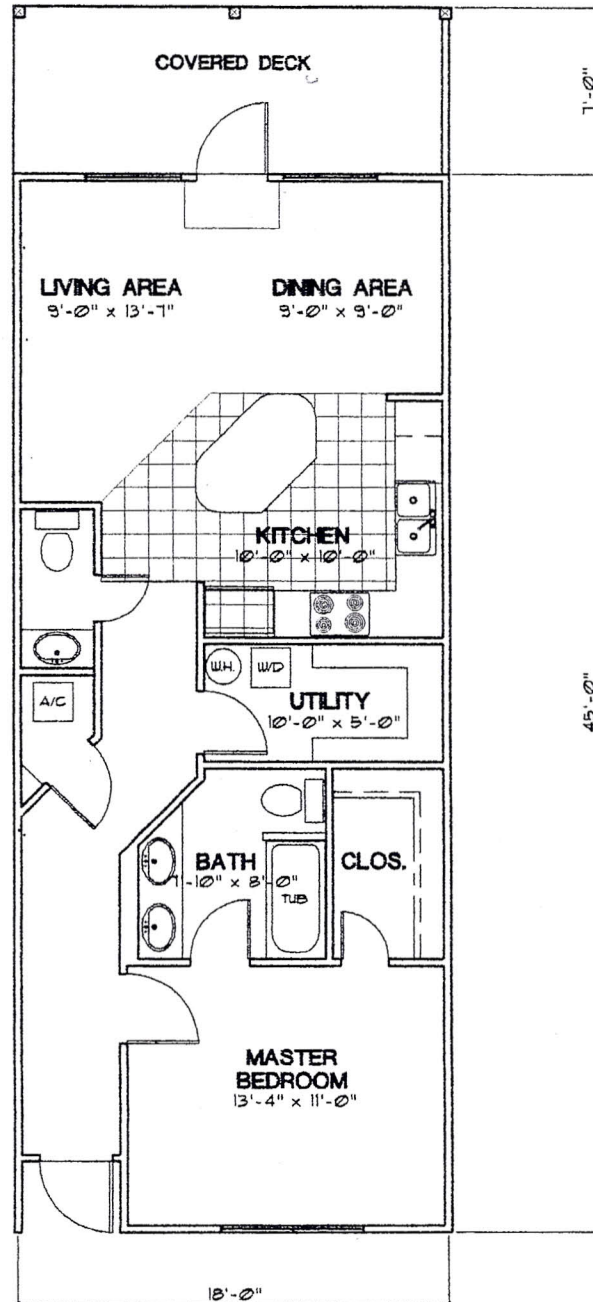


NATURES LANDING CONDOMINIUMS

SITUATED IN THE TOWN OF CEDAR KEY, SECTION 29 & 32, TOWNSHIP 13 SOUTH,
RANGE 15 EAST, LEVY COUNTY, FLORIDA



FLOOR PLAN - ONE BEDROOM

AREAS	
LIVING AREA	- 210 SF.
COVERED DECK	- 126 SF.

**NATURES LANDING
CONDOMINIUMS**
CEDAR KEY, FLORIDA

**Donald Alan Yanskey
ARCHITECT**
6418 Northwest 27th Street • Gainesville, Florida 32653
Phone (352) 375-1312 • FAX (352) 375-1312

SHEET
23
OF 23

DATE APRIL 9, 2001

DRAWN BY D. A. Y.